

Las Cruces Area Brief



Part I.A – Airport & Area



Las Cruces Airport





Las Cruces Comms

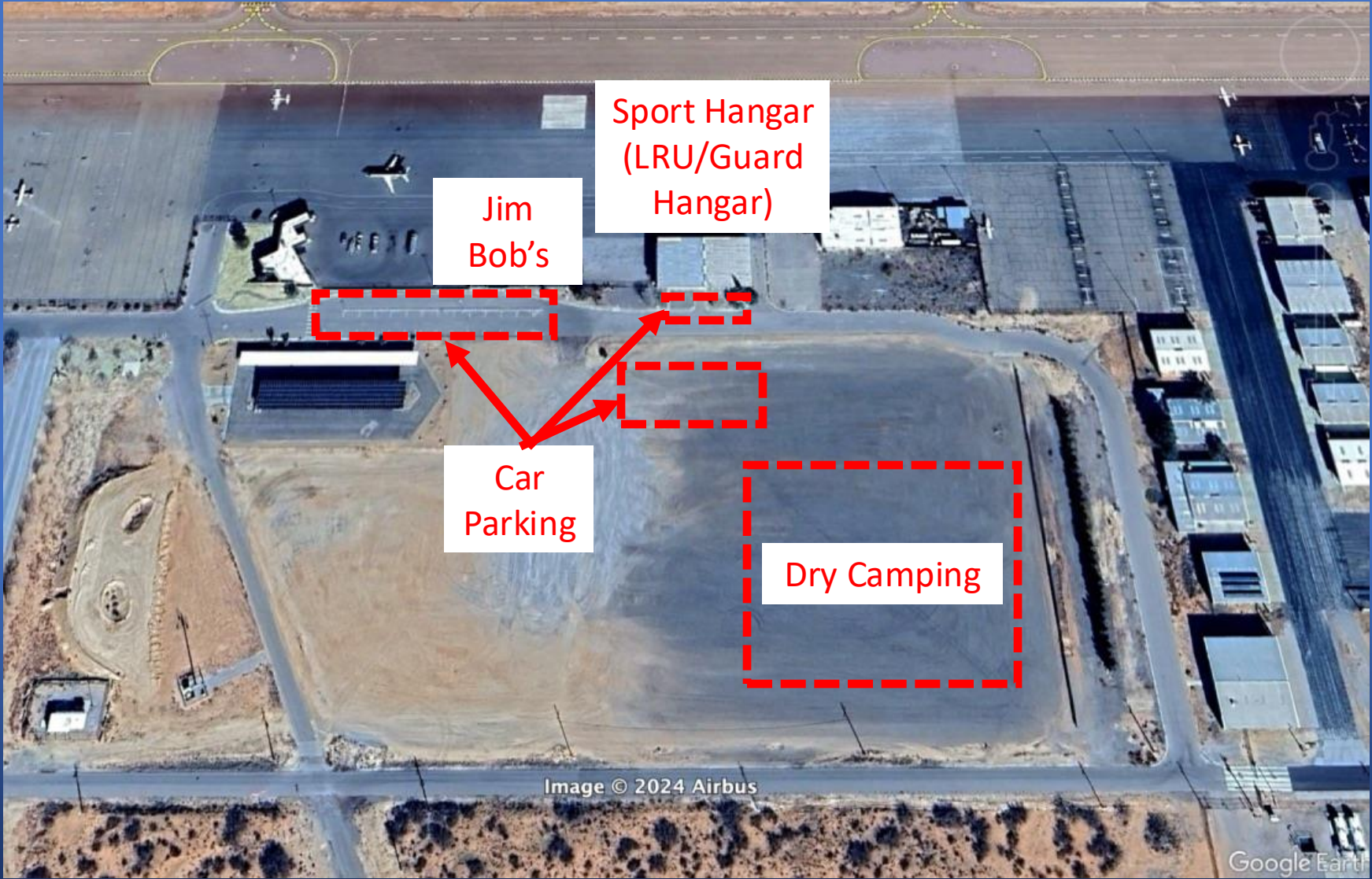
- Frequencies

- AWOS – 119.025
- CTAF – 122.7
- ABQ Center – 128.2

- Race Frequencies

- AirBoss/Rc Cntrl – 122.775
- AirBoss BU – 122.7
- Sport – 119.15
- Sport BU – 130.30

Las Cruces Airport – Non-Airside/Auto-Parking

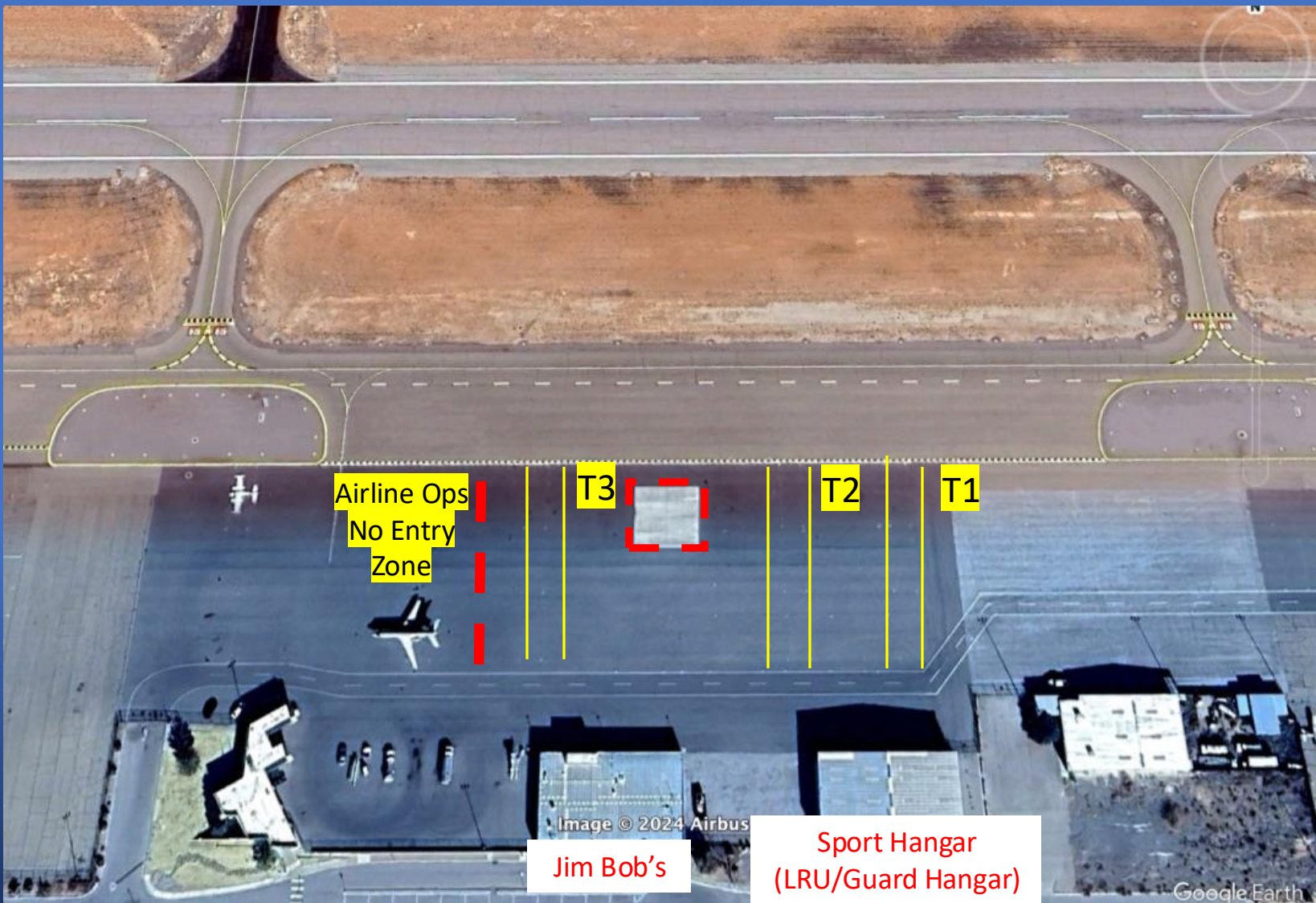


Runway & Ramp Overview



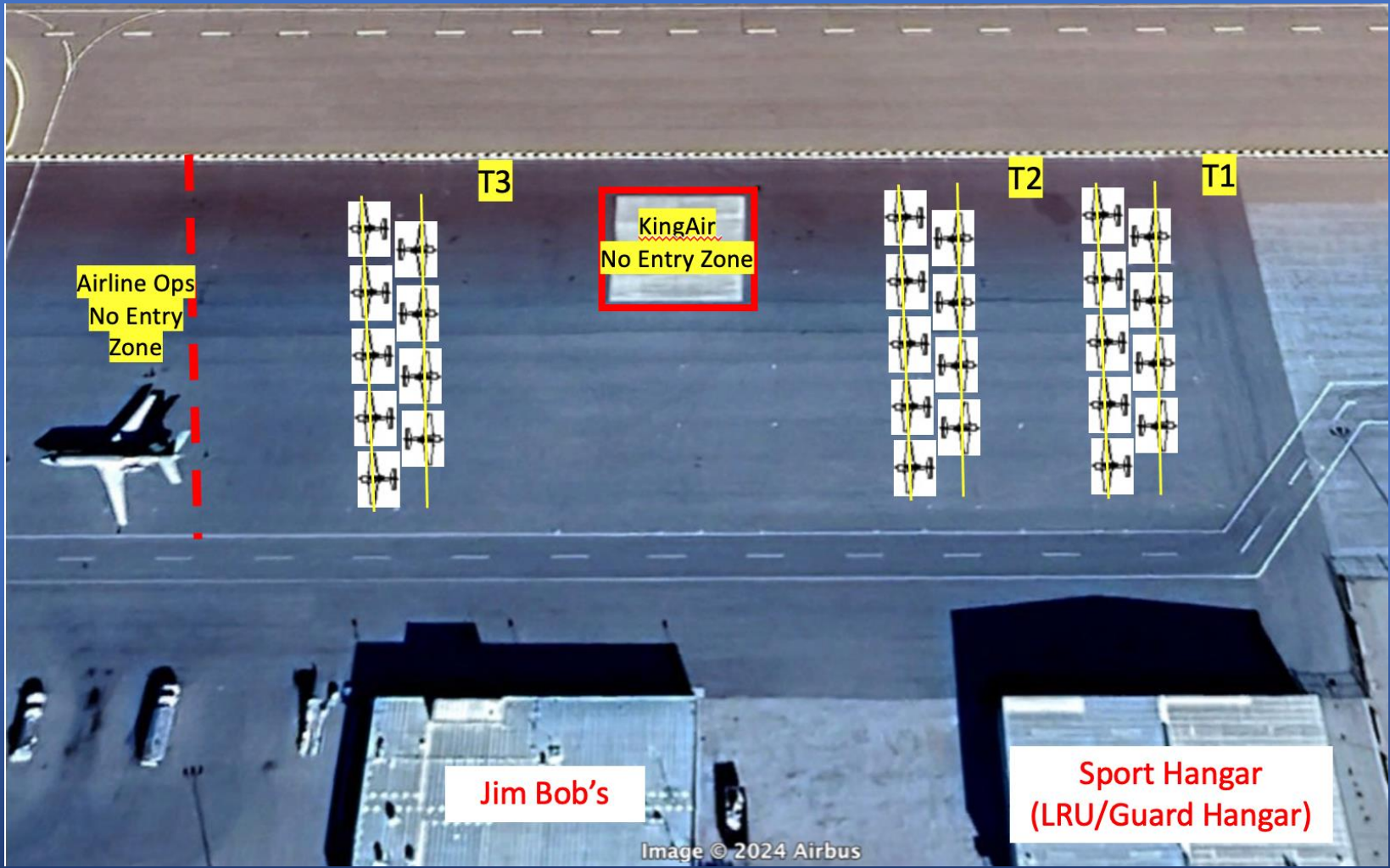
Ramp Overview

- 3 Rows of Parking
- 3 Taxi Lanes



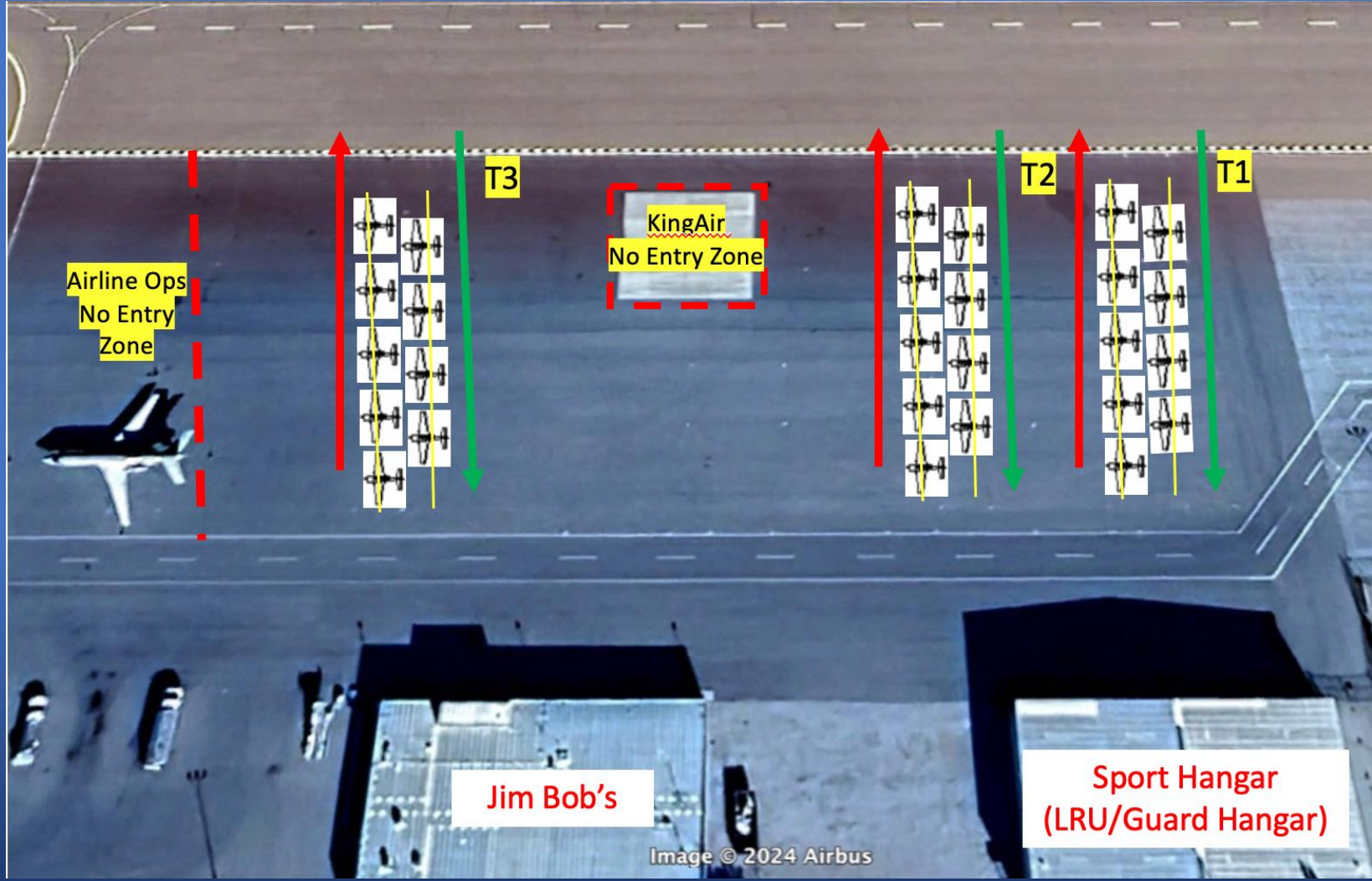
Parking Layout

- Pre-Stage/Windy Parking Plan
- A/C Tied down & tail-to-tail



Ramp Flow

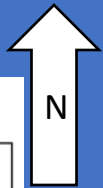
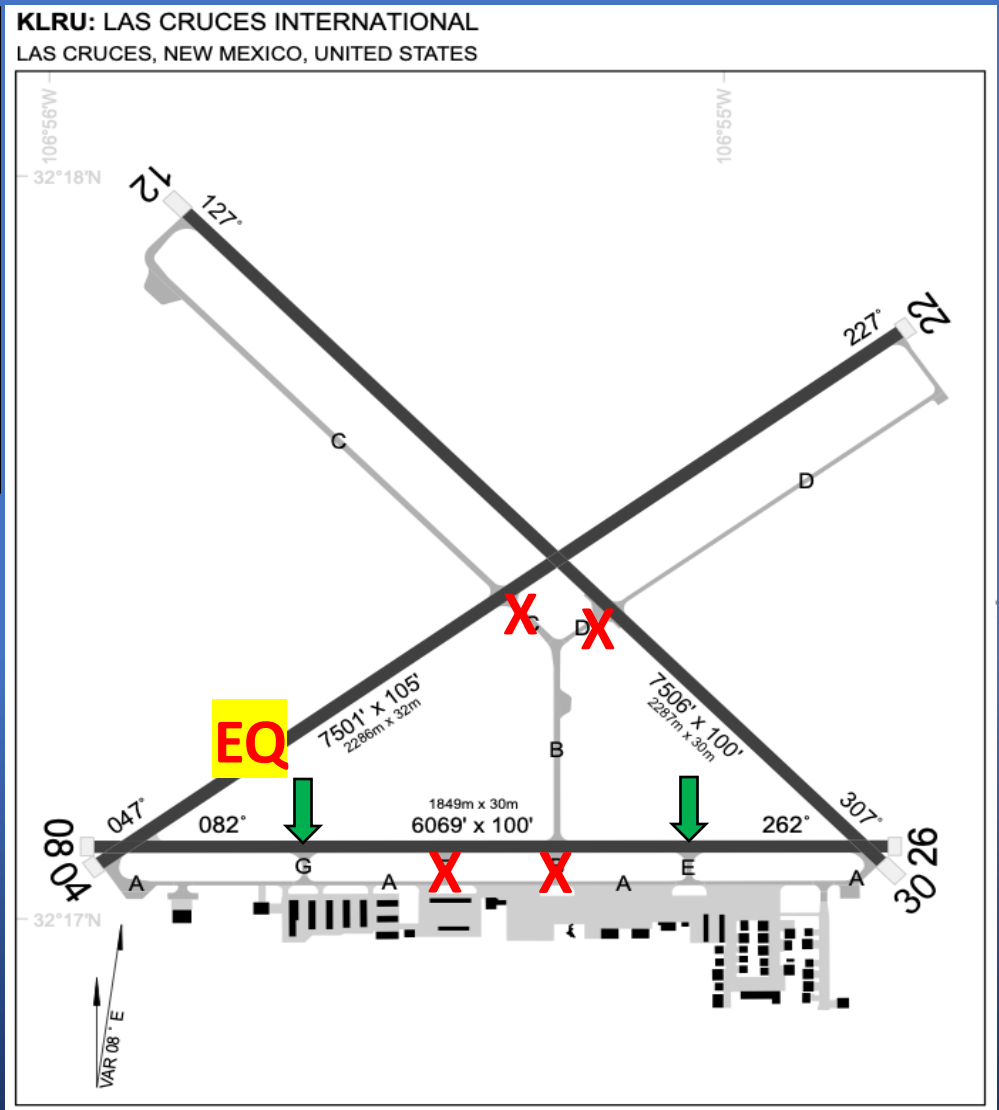
- Clockwise Taxi Flow
IN & OUT
- A/C staged for flight ops



Las Cruces Airport - Runway OPS

SARC/Sport Class Runway Procedures

- Hot = N ; Cold = S
- No mid-field turn offs
 - 8 Exit E ; 26 Exit G (or to end)
 - 12/30 Roll to end
 - 4/22 Emergency only
 - Const Eq in first 1/3 of RWY 4

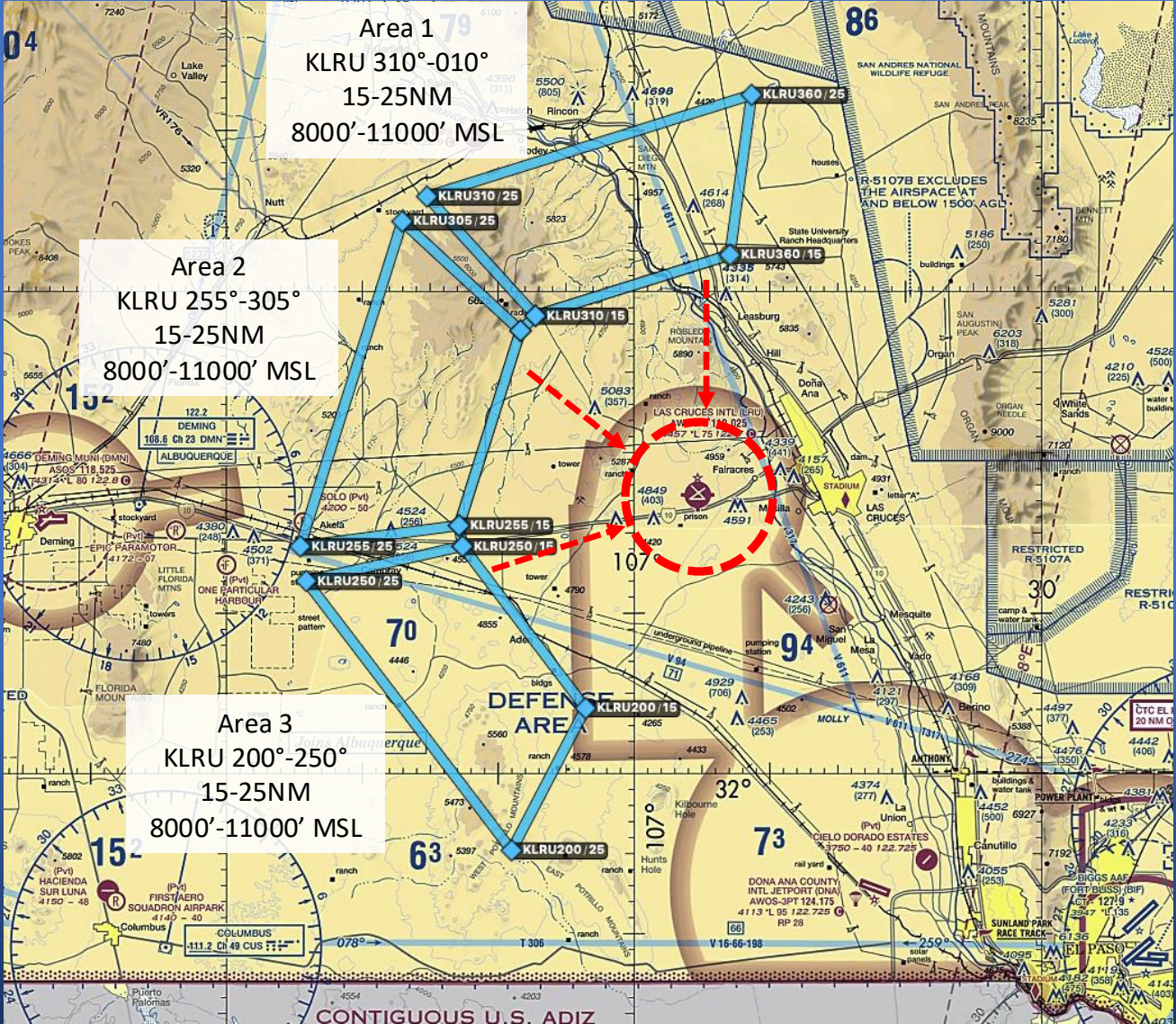


Part I.B KLRU Practice Areas



- Area 1
 - N of Radome
 - E of Hatch
 - S and W of "R" Areas
 - 123.15
- Area 2
 - W of Radome
 - N of I-10
 - 123.25
- Area 3
 - S of I-10
 - 123.35

KLRU RTB From Practice Areas



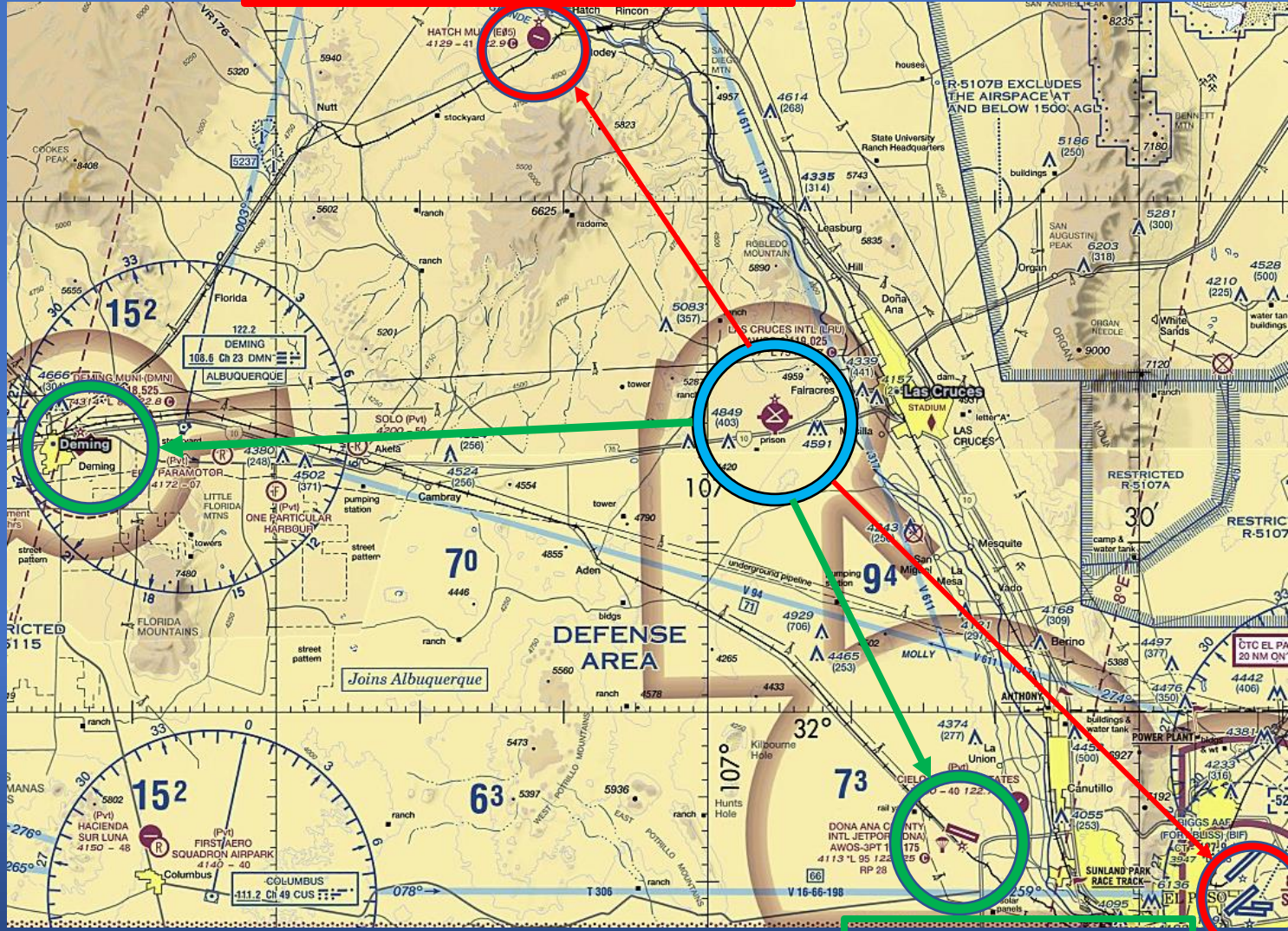
- Area Departure
 - Switch 122.7 before exiting area
 - Exit At or ABV 8000'
- Transit to KLRU
 - To Chart Right (E or N) Side of Area
 - At or ABV 8000' to 5NM Arc
 - 122.7
 - Arc outside 5NM to initial for active
 - Enter via a 5NM initial
 - Leave 8000' approaching initial
 - Break Altitude 5500'
 - Level Break for Fixed Gear Flights
 - Break to 6000' for Retract Flights
 - Standard Sport Break and Pattern Calls

- E05 (Hatch) 320 @ 26
- 11/29 – 4100'
- CTAF: 122.9

Divert Fields

- Primary
- Secondary

- DMN 260 @ 41
- 8/26 – 8000'
- CTAF: 122.8



- DNA 150 @ 27
- 16/34 – 5200
- CTAF: 122.725

- ELP 130 @ 40
- 8/26 – 9000'
- 4/22 – 12000'
- TWR: 118.3

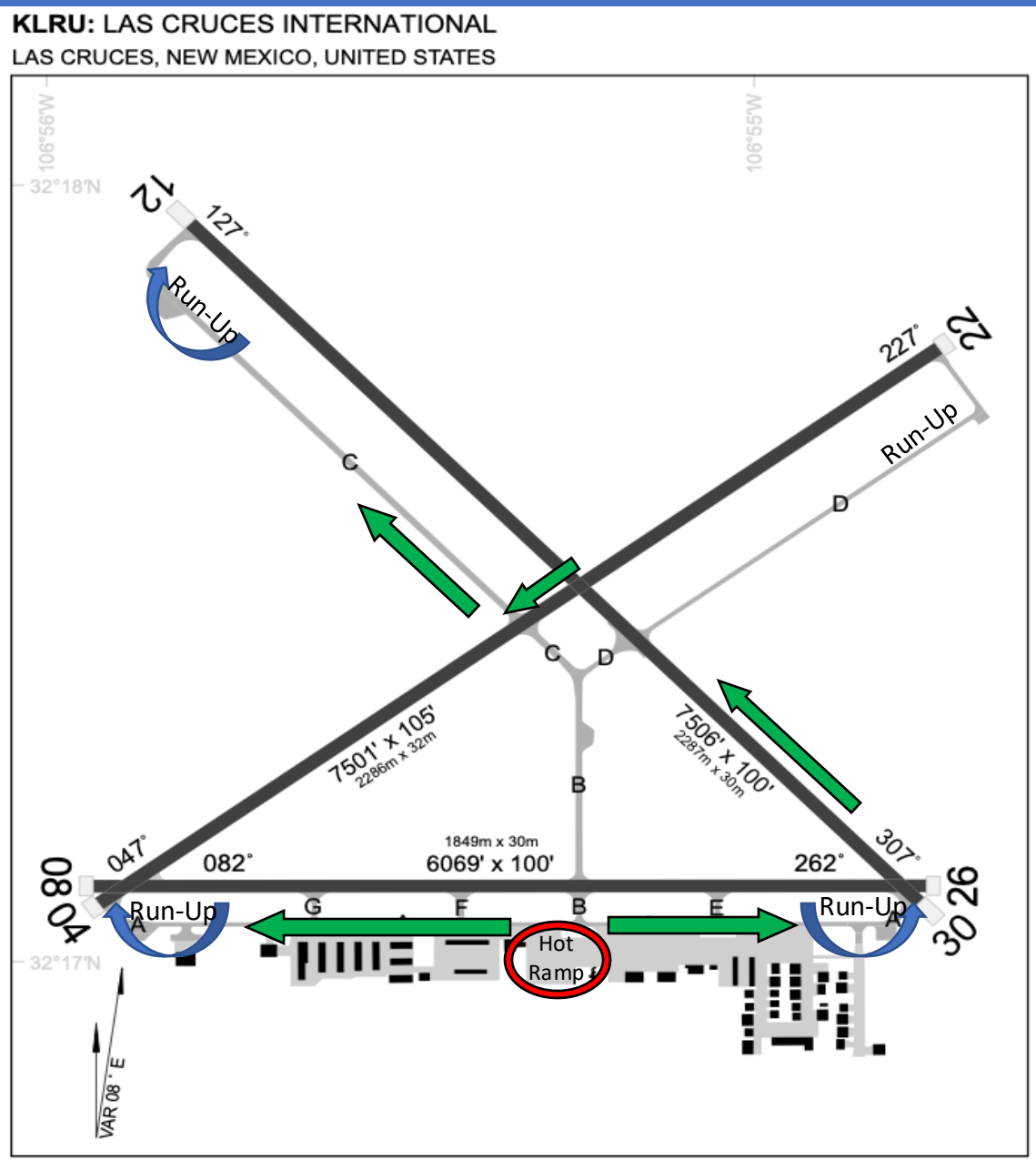


Part I.C – Ground and Rejoin Procedures



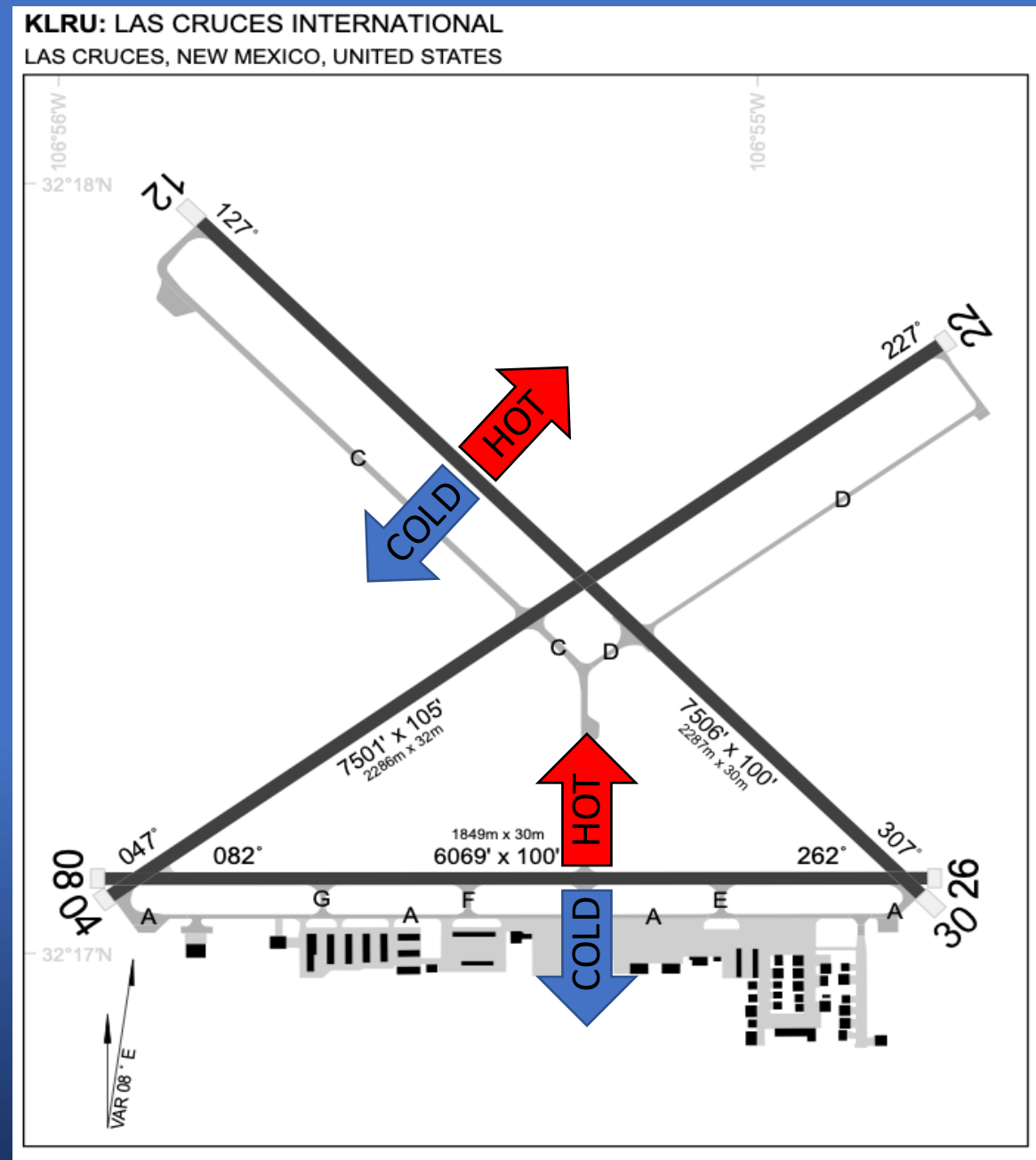
Taxi Out & Run Up

- Start & Check in on Company
- Taxi & Depart on CTAF
- Standard Race SOP taxi from Hot Ramp to Run-up
- Run-up Complete: Standard Race SOP ready call from -2
- Standard Race SOP Line-up and Launch



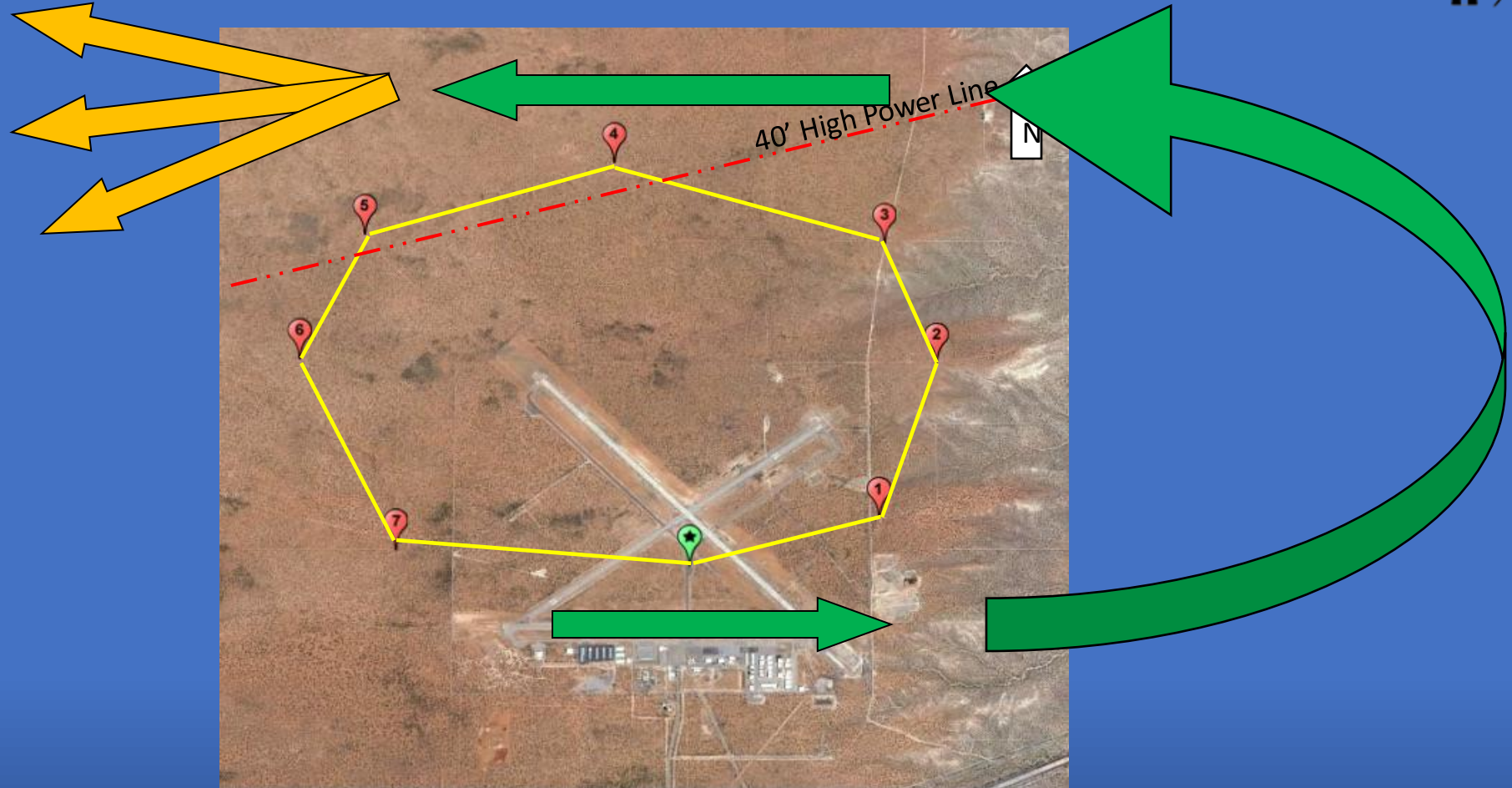
Hot Side – Cold Side

- Hot = N
- Cold = S



RWY 8 Departure – Rejoin Procedure

To Practice Areas



RWY 26 Departure – Rejoin Procedure

To Practice Areas

