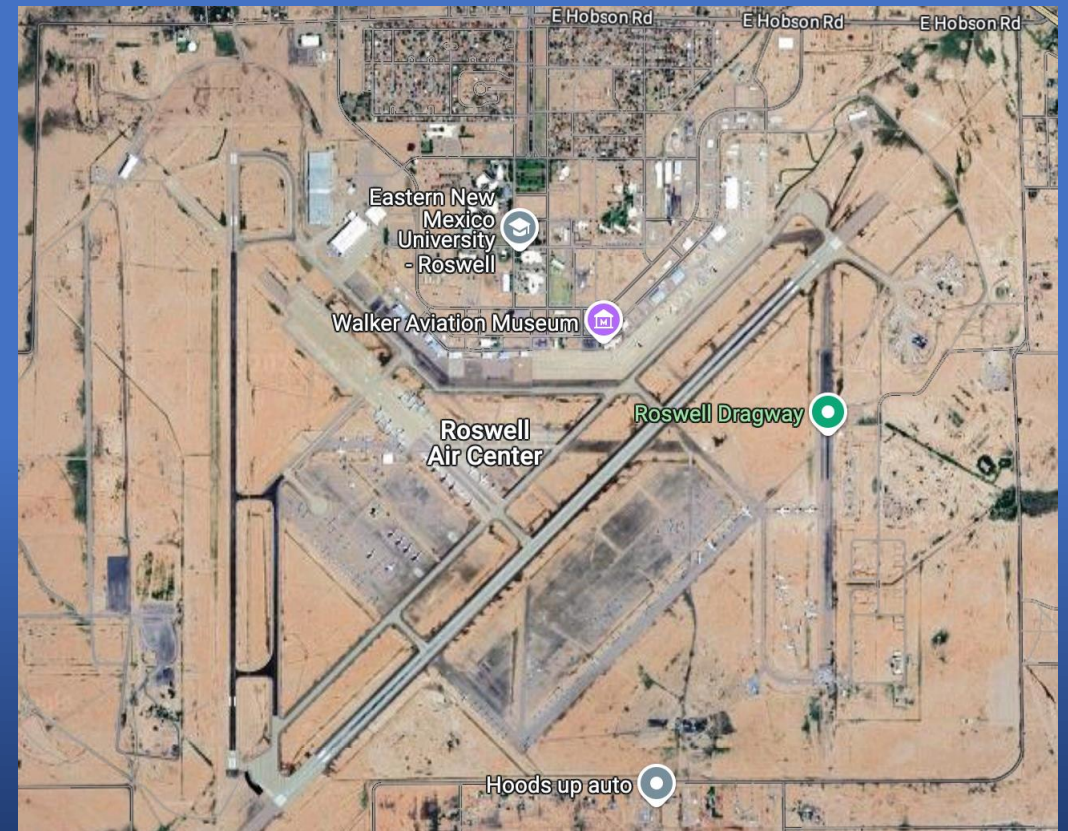
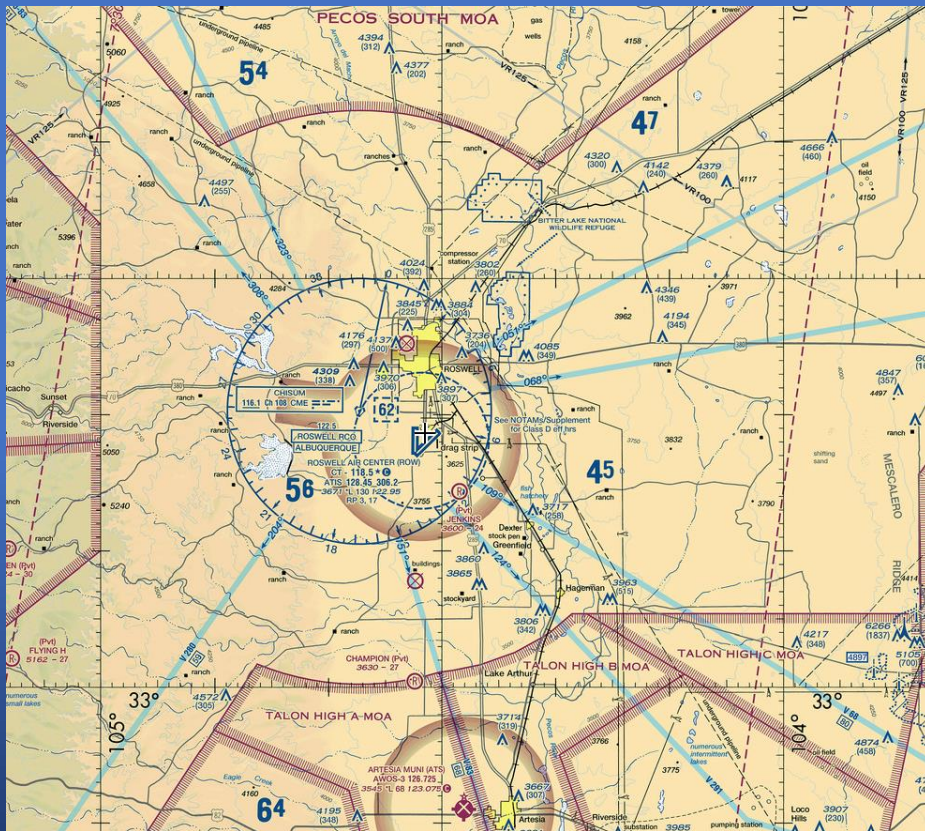
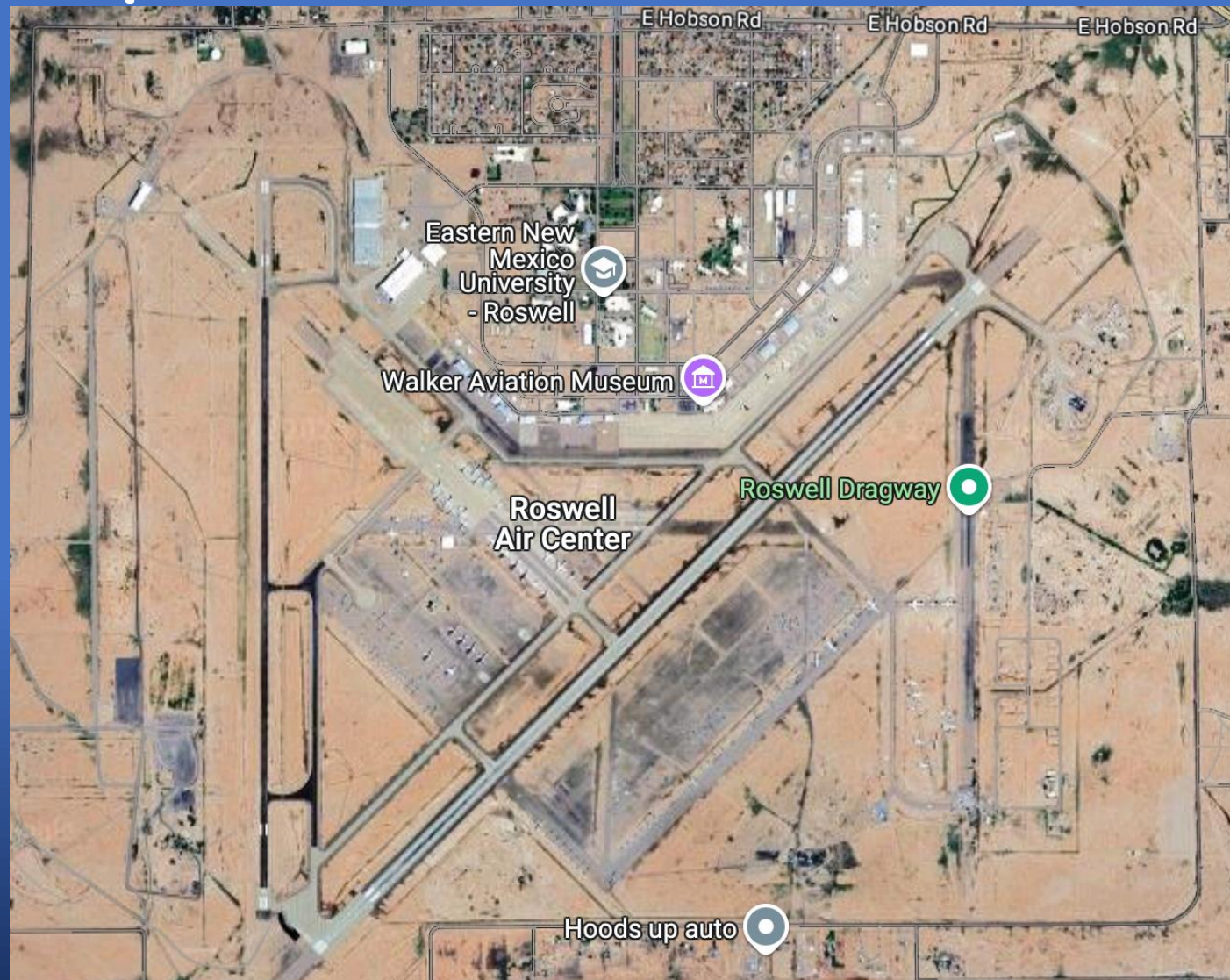


Roswell Area Brief

Part I.A – Airport & Area



Roswell Airport



Roswell Comms

- Frequencies

- ATIS – 128.45
- CTAF – 118.5
- Tower – 118.5
- ROW App/Dep – 119.6

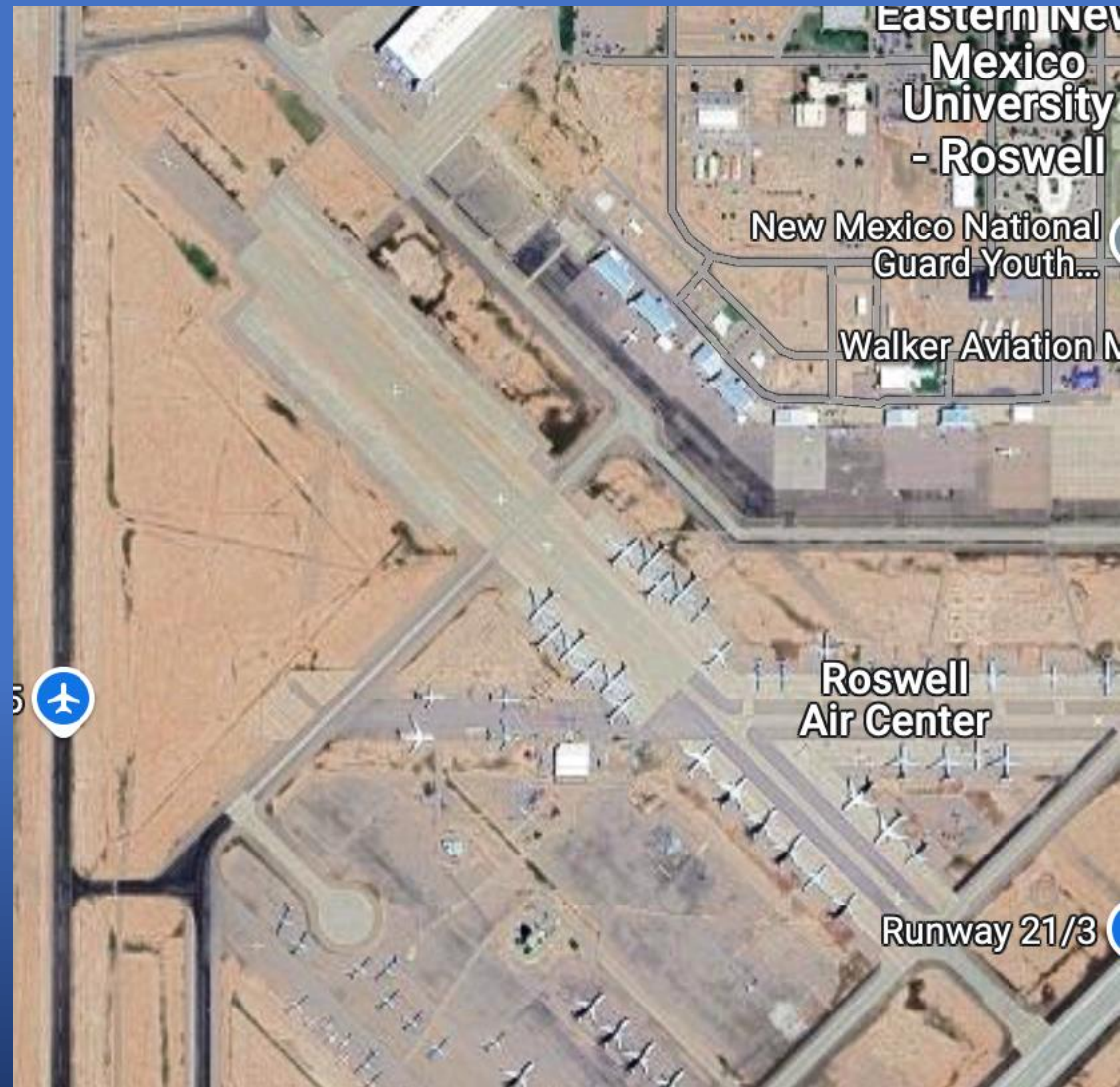
- Race Frequencies

- AirBoss/Rc Cntrl – TBD
- AirBoss BU – TBD
- Sport – 119.15
- Sport BU – 130.30

Roswell Airport – Non-Airside/Auto-Parking

- From RARA

Ramp Overview



Parking Layout

- TBD RARA Parking Ops

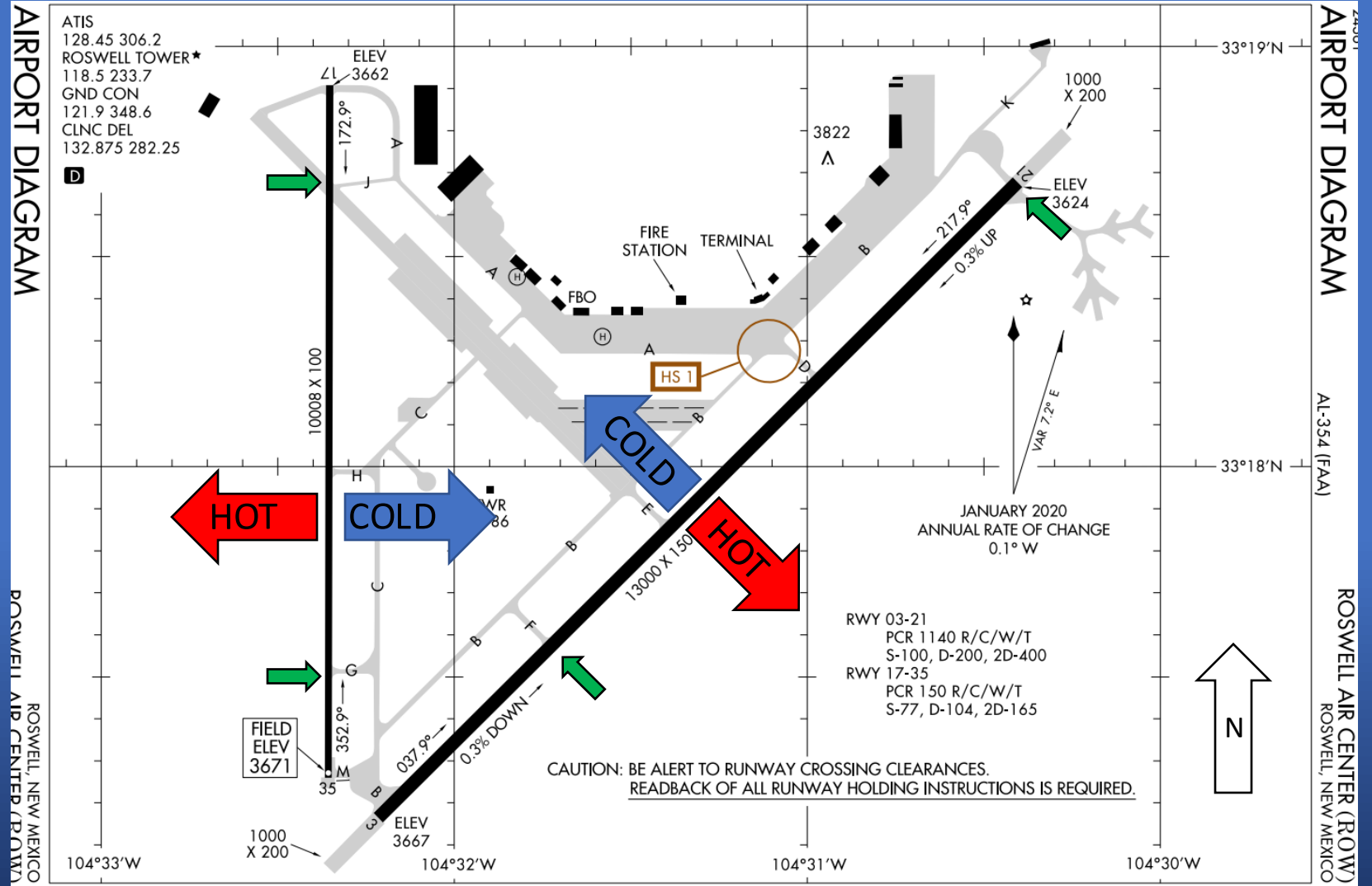
Ramp Flow

- TBD RARA Hot Ramp Ops

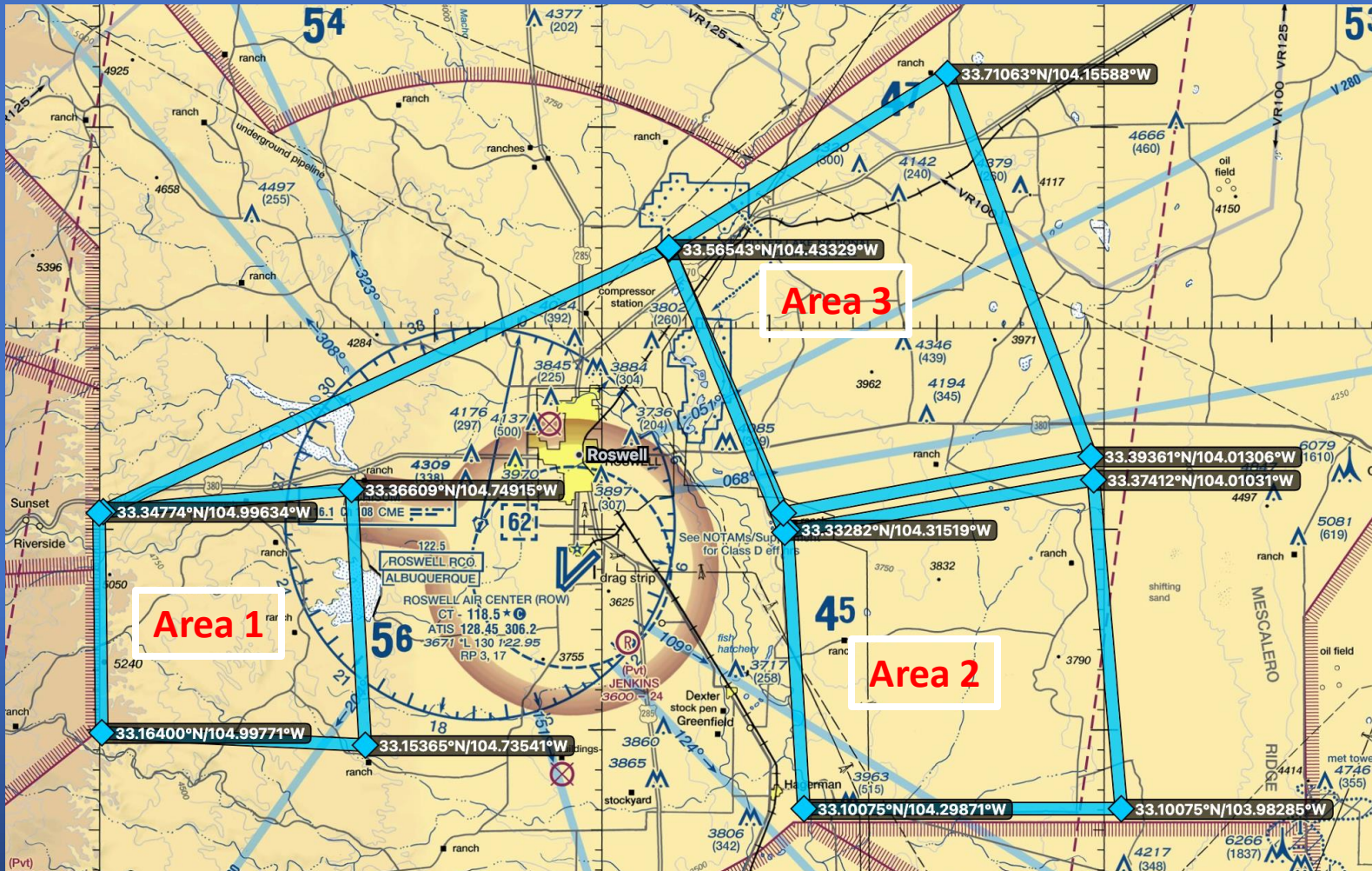
Roswell Airport - Runway OPS

SARC/Sport Class Runway Procedures

- Hot = W/S ; Cold = E/N
- No mid-field turn offs
 - 35 Exit J ; 17 Exit G
 - 21 Exit F ; 03 Exit End



Part I.B KROW Practice Areas



- Area 1
 - Hwy 380 N
 - Dry lakebeds E
 - MOA W
 - ~10x10 nm
- Area 2
 - North Boundary
 - LRU 080 15-30 nm
 - South Boundary
 - MOA
- Area 3
 - North Boundary
 - N.side of Hwy 70
 - South Boundary
 - LRU 075 15-30 nm

KROW Departures to Practice Areas



- Rejoin
 - Within 5NM of KROW
 - At or BLO 6000'
- Transit to Area
 - To Chart Left (W or S) Side of Area
 - At or BLO 6000'
 - Go Company entering area
 - Climb ABV 6000' entering area

KROW RTB From Practice Areas



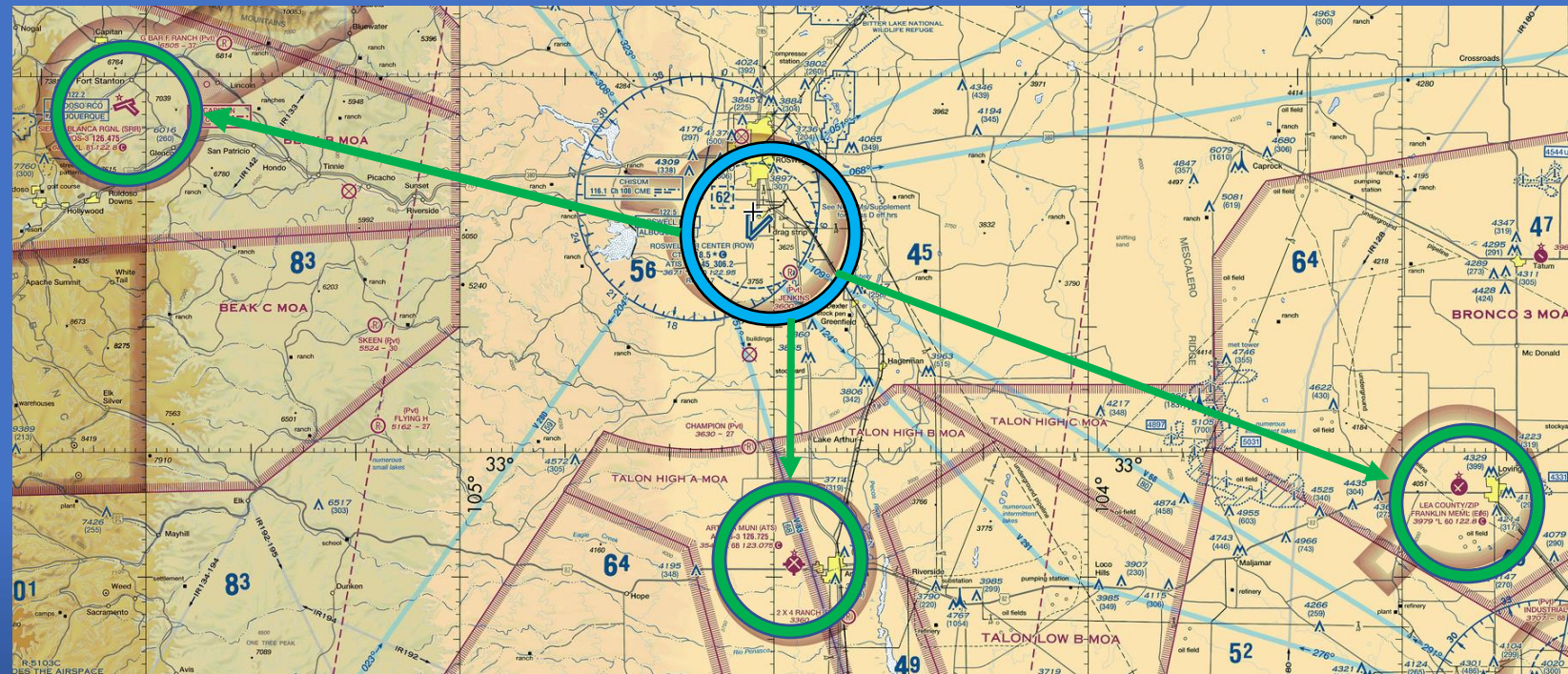
Area Departure

- Switch **TWR** before exiting area
- **Exit At or ABV 8000'**
- Transit to KROW
 - To Chart Right (E or N) Side of Area
 - **At or ABV 6000' to 5NM Arc**
 - **Arc outside 5NM to initial for active**
 - **Enter via a 5NM initial**
 - **Leave 6000' approaching initial**
 - **Break Altitude 3800'**
 - **Level Break for Fixed Gear Flights**
 - **Break to 4300' for Retract Flights**
 - **Standard Sport Break and Pattern Calls**

Divert Fields

 - Primary

- SRR 274 @ 51
- 6/24 – 8100'
- CTAF: 122.8



- ATS 167 @ 27
- 4/22 – 6800
- CTAF: 123.05

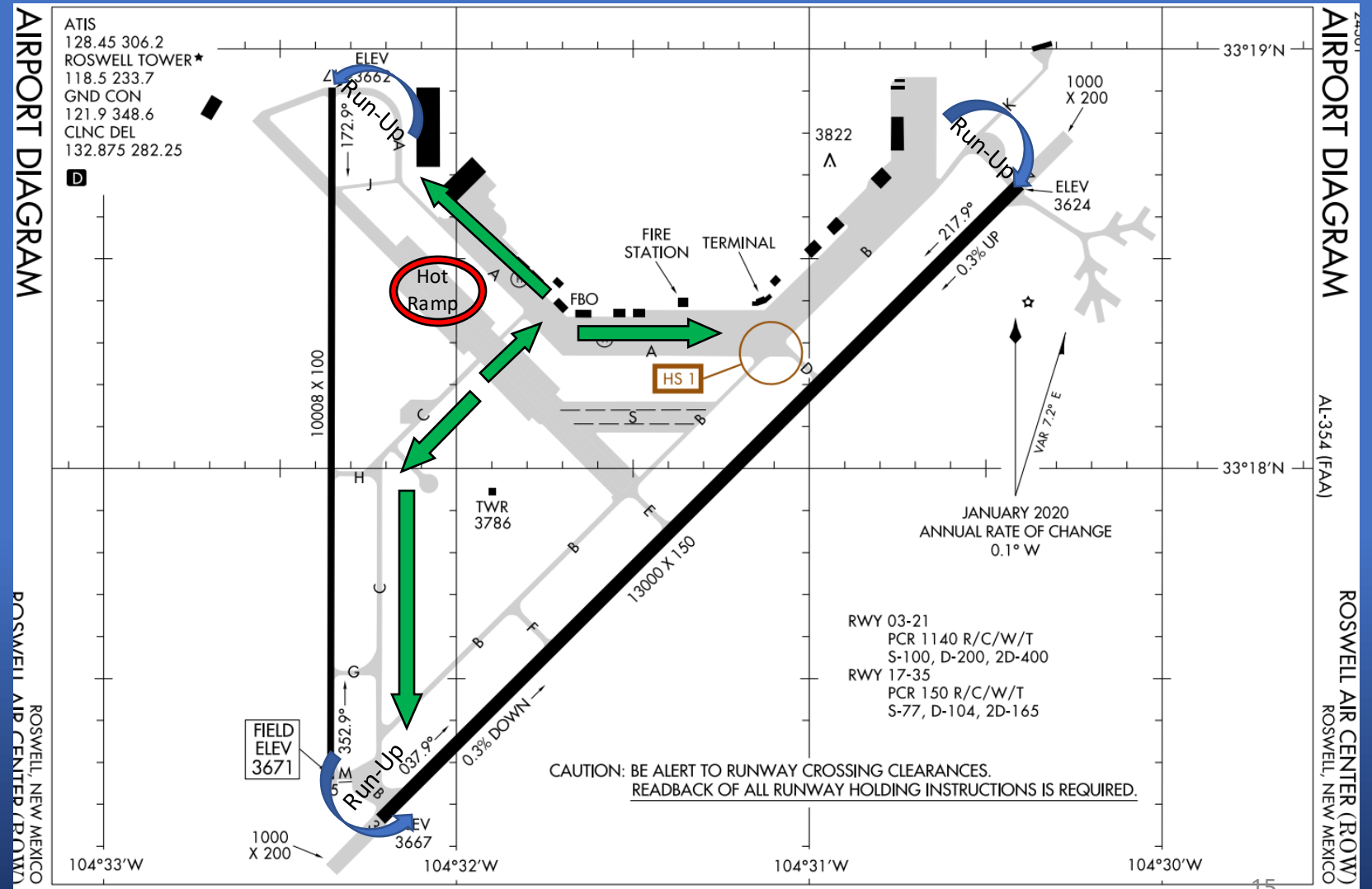
- E06 103 @ 60
- 3/21 – 6000
- CTAF: 122.8

Part I.C – Ground and Rejoin Procedures



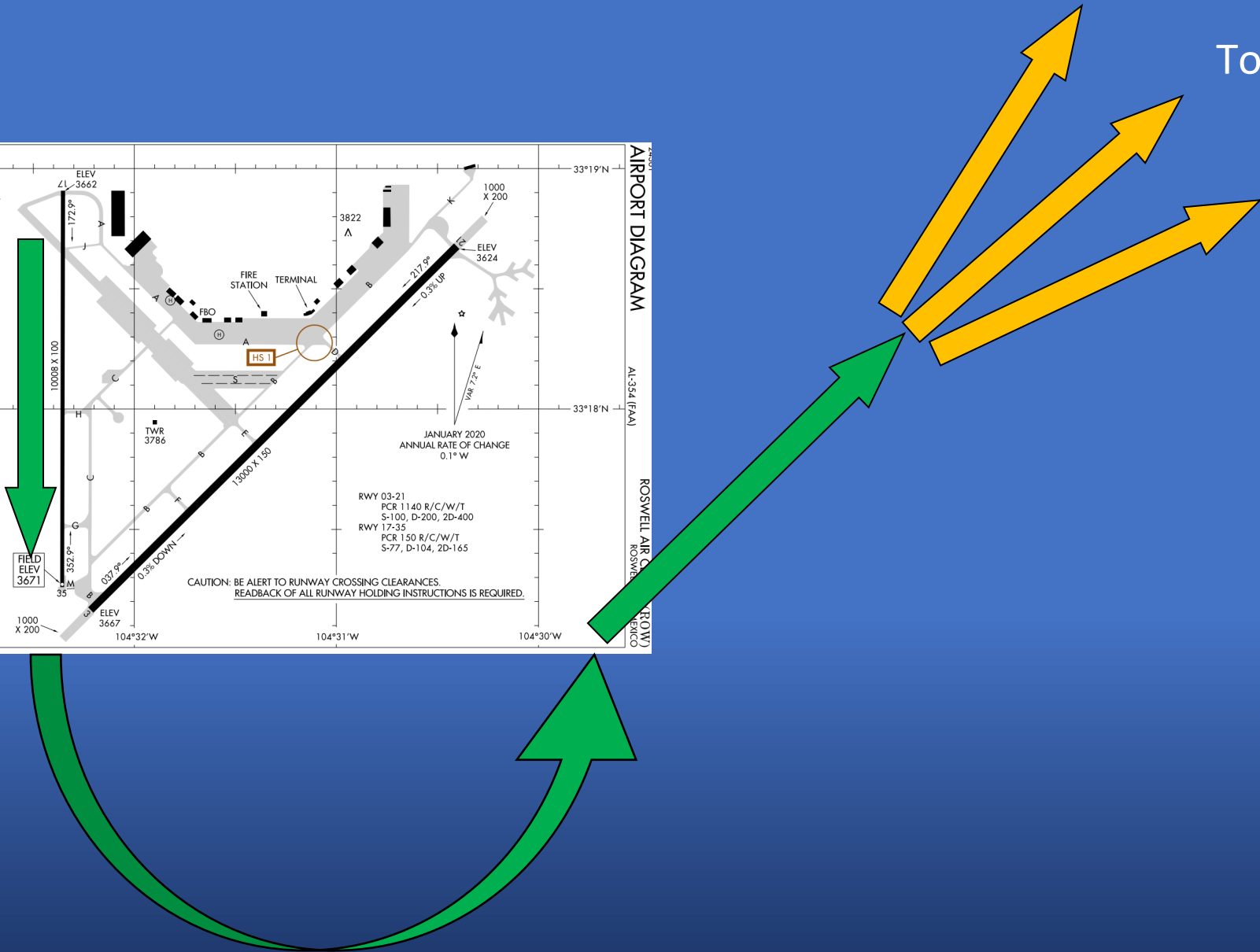
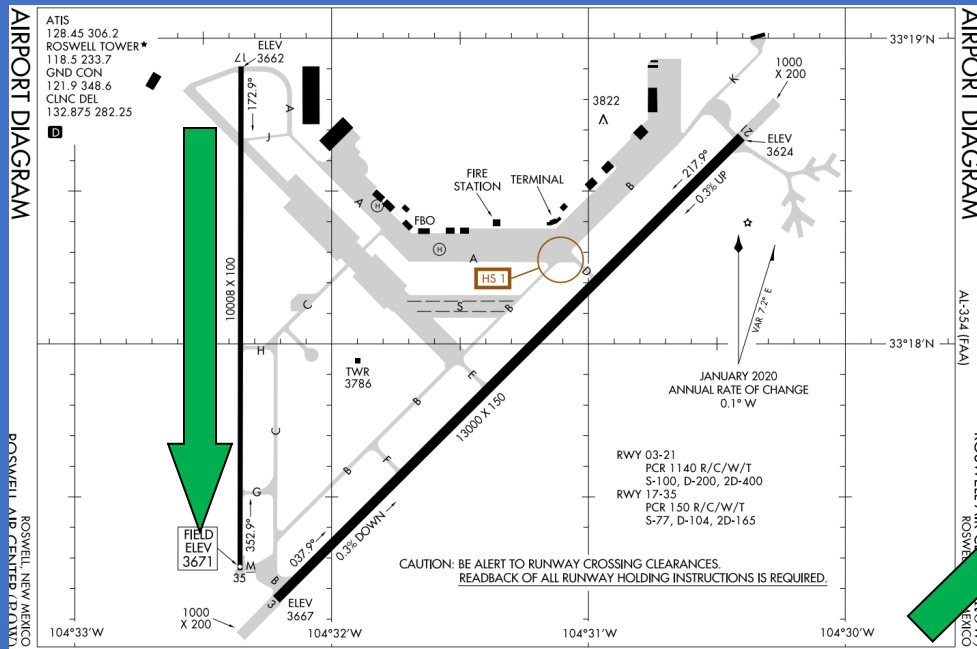
Taxi Out & Run Up

- Start & Check in on Company
- Taxi on Ground
- Depart on RC
- Standard Race SOP taxi from Hot Ramp to Run-up
- Run-up Complete: Standard Race SOP ready call from -2
- Standard Race SOP Line-up and Launch

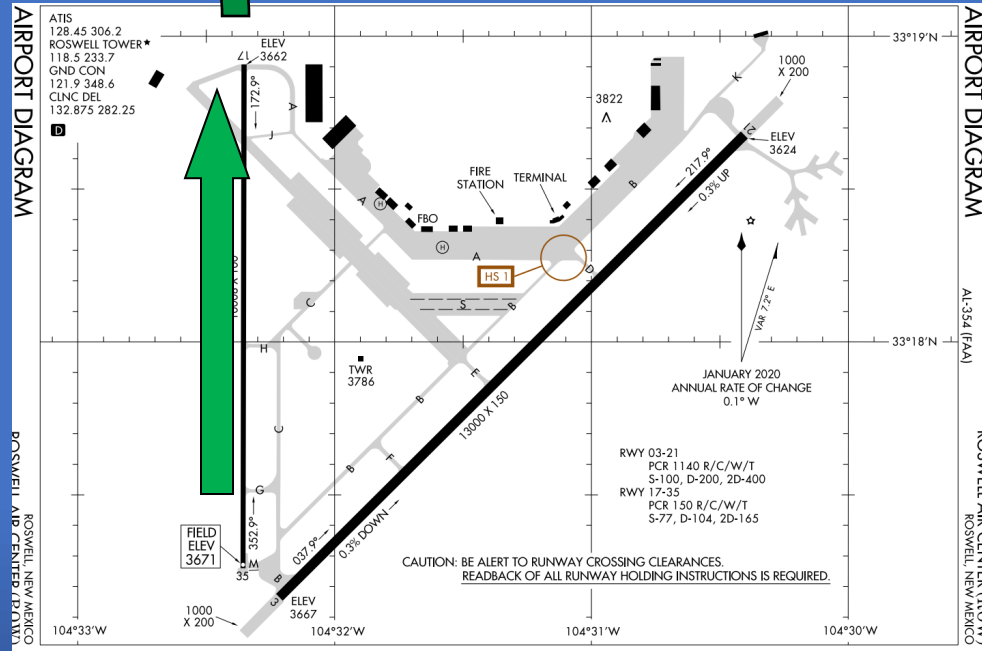
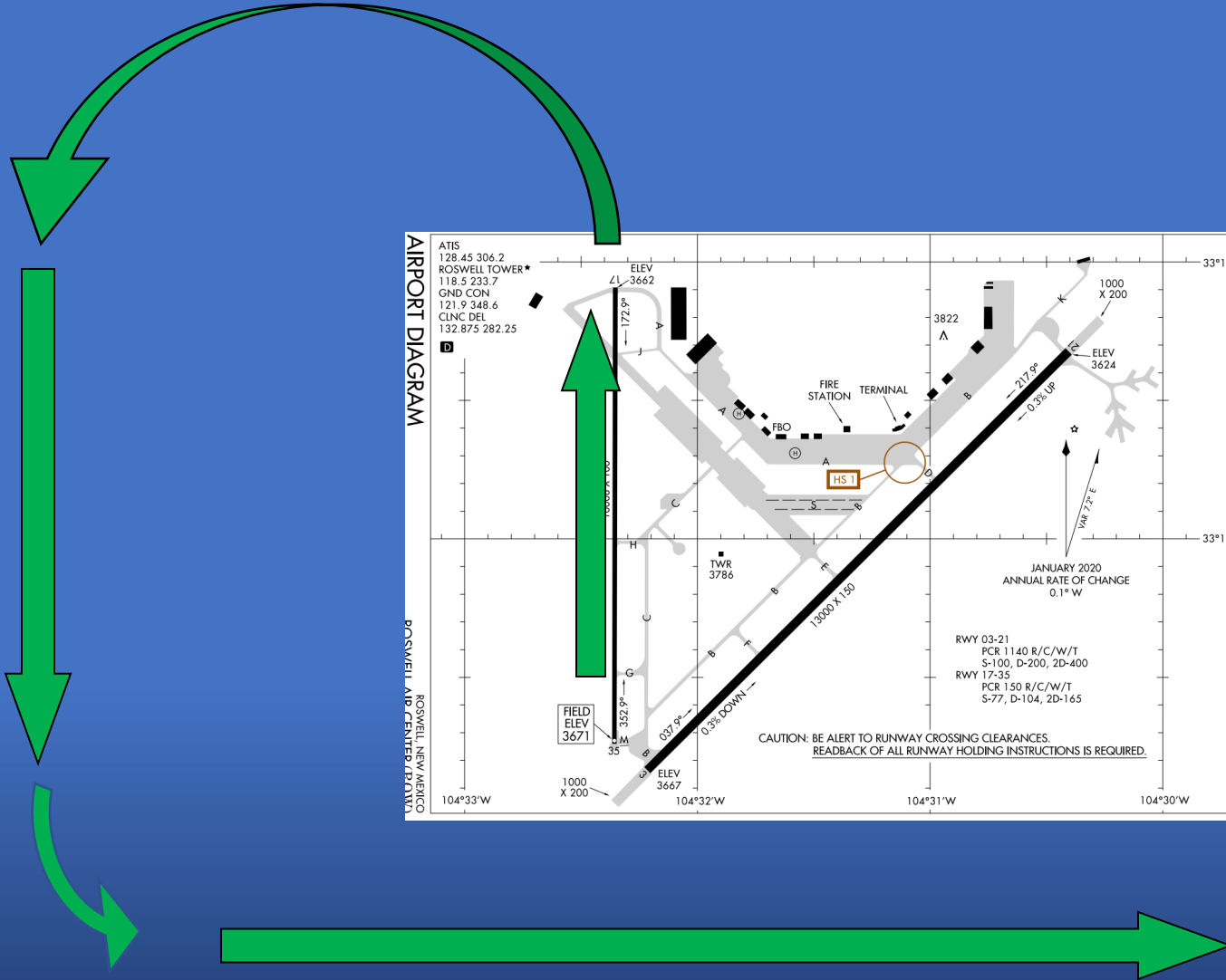


RWY 17 Departure – Rejoin Procedure

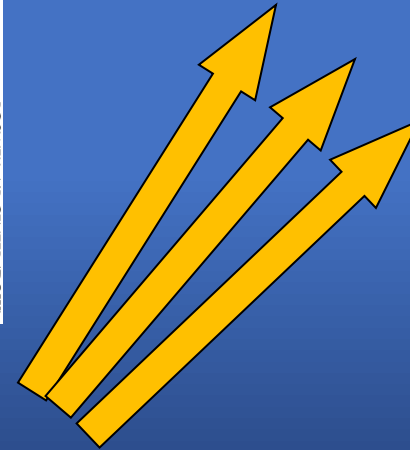
To Practice Areas



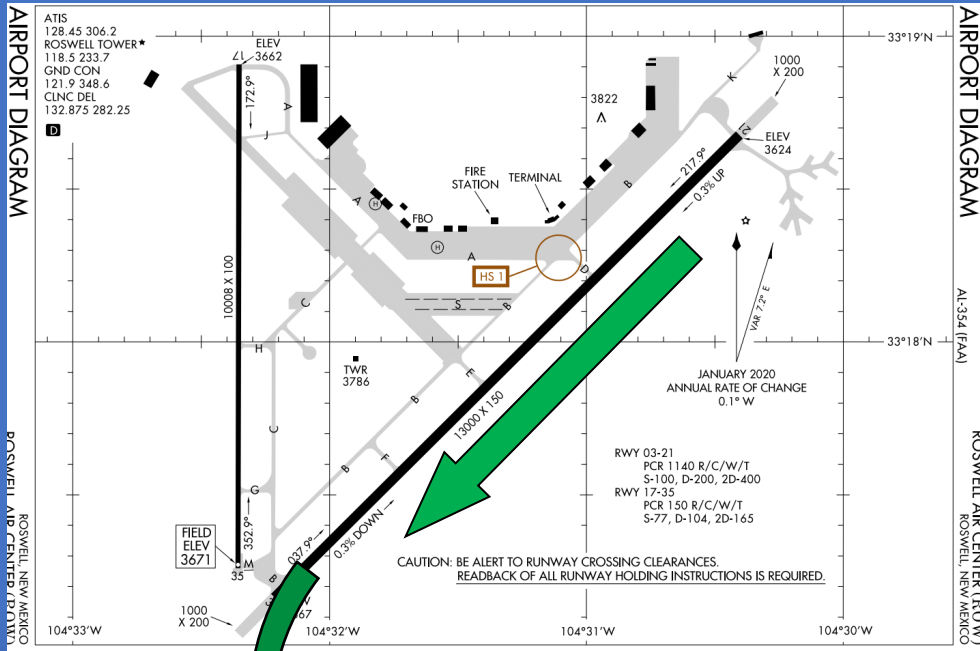
RWY 35 Departure – Rejoin Procedure



To Practice Areas



RWY 21 Departure – Rejoin Procedure



To Practice Areas

